



Valley Primary School Newsletter

GROWING AND LEARNING TOGETHER TO BE THE BEST WE CAN BE!
ASPIRE...ENJOY...ACHIEVE...CHALLENGE!

Friday
18th
October
2024

NOTE FROM THE ASSISTANT HEADTEACHER

Dear Parents and Carers,

This week, we have been celebrating Black History Month with the UK's theme, *Reclaiming Narratives*. This theme focuses on sharing stories of Black history and culture, as well as correcting historical inaccuracies. Across school, the children have been exploring both well-known and lesser-known stories of significant Black figures across the globe, learning about their achievements and important contributions. Through reading, writing, and listening activities, they have shown great curiosity and respect for what they've learned. Listening to these stories and learning about historical figures can inspire the younger generation to dream big, and we hope they will share these ideas with you at home!

We look forward to seeing you at Parents' Evening next week to celebrate the many successes of this busy first half term.

Have a wonderful weekend!

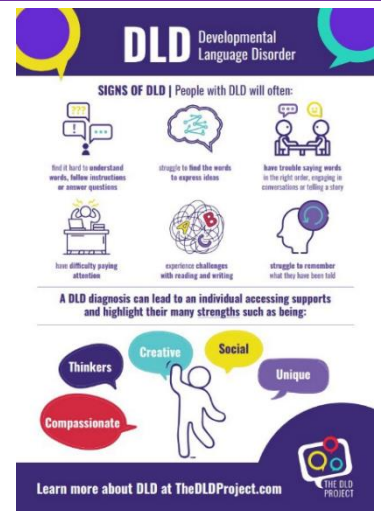
Mrs Burgess

VALLEY NEWS AND REMINDERS

Raising Awareness of Developmental Language Disorder

Friday 18th October is the day we raise awareness of DLD across the world. Developmental Language Disorder is a hidden but common disability that affects 1 in 14 people causing significant difficulties understanding and using language. We are raising awareness of DLD at Valley Primary in support of children and families in our school family.

Here is a short clip explaining DLD: [Raising Awareness of Developmental Language Disorder \(DLD\) Day: #ThinkLanguage #ThinkDLD \(youtube.com\)](#)



FREE Cycle Training this Half Term

Solihull Council would like to invite all pupils aged 5 plus to join their **FREE & FUN Get Pedalling Cycle Training** which is happening during October Half Term. The sessions are indoors at Tudor Grange Leisure Centre on **Friday 1st November** and North Solihull Sport Centre on **Monday 28th October and Thursday 31st October**. Both bikes and helmets are available to borrow, or the children can bring their own. Please follow the link to book your required session.

<https://solihull.cycleready.co.uk/publicbooking>

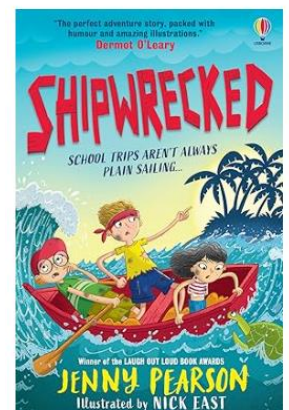
OUR READING RECOMMENDATION

'Shipwrecked' by Jenny Pearson

Sebastian Sunrise and his two best friends, Lina and Étienne, are in a bit of trouble. They are stranded on a desert island in the middle of the Pacific Ocean, after a rowing race went very, very wrong. The friends have no idea how long they might have to stay on the island, so they make a plan. They will try to survive, look after the island's baby turtles, and have fun, if they can.

When a boat arrives, bringing pirates who want to hunt the island's baby turtles, the friends face their greatest danger yet...

This book is suitable for readers in Middle Phase.



SHARING OUR LEARNING

Lower Phase

This week in **Reception**, the children have used their phonic knowledge to write shopping lists by writing the initial sound for the items that they want to buy.



Middle Phase

Penguin fact-files have been such a success this week in **Year 2!** The children have discovered lots of new facts about emperor penguins and Antarctica. With this new information, they then worked as a team to create beautifully presented fact files.

Even Mr Martindale came in and looked at the fabulous work!



Upper Phase

As part of our Topic work, **Year 6** have been working hard to create calligram portraits in the style of Screen Prince.



PARENT PARTNERSHIPS

Note from the Parent Liaison Lead

During a time of increased financial pressures for families we wanted to remind parents that your child may be able to receive free school meals and support towards the cost of school activities if you are in receipt of any of the following:

Income Support

Income-based Jobseeker's Allowance

Income-related Employment and Support Allowance

Support under Part VI of the Immigration and Asylum Act 1999

The guaranteed element of Pension Credit

Child Tax Credit (provided you're not also entitled to Working Tax Credit and have an annual gross income of no more than £16,190)

Working Tax Credit run-on - paid for 4 weeks after you stop qualifying for Working Tax Credit

Universal Credit - Your household income must be less than £7,400 a year (after tax and not including any benefits you get)

If you believe you qualify for this support, please apply via the council portal in which you reside. Please follow one of the following links for either Birmingham City Council or Solihull Metropolitan Council.

<https://www.solihull.gov.uk/Children-and-family-support/Early-years-pupil-premium>

https://www.birmingham.gov.uk/info/20130/childcare_and_early_years/629/free_childcare_and_education_for_children_aged_9_months_to_4_years/4

Further Developing Partnerships

It is always a pleasure to receive your comments and feedback, and we are always happy to answer any questions or queries you have, please continue to email these to parentliaisonlead@valley.solihull.sch.uk

ATTENDANCE – W/C 7 October – 11 October 2024

UPPER PHASE	Ennis 6	93.4%	Farah 6	91.7%	Simmonds 6	95.0%	Holst 5	97.7%	Lynn 5	95.9%	Webber 5	95.9%
	Hawking 4	95.0%	Newton 4	97.3%	Sharman 4	95.0%						
MIDDLE PHASE	Hockney 3	94.8%	Lowry 3	99.2%	Riley 3	92.3%	Churchill 2	89.2%	Nightingale 2	92.0%	Pankhurst 2	99.2%
LOWER PHASE	Bell 1	90.4%	Lee 1	91.7%	Shaw 1	97.3%	Aston R	89.7%	Grylls R	93.2%	Peake R	86.4%
	Nursery	91.2%										

Well done to the highlighted classes who are this week's winners!

DIARY DATES

Please join us for these events...

- 21st October –SLT Drop in Session – Old Lode Lane - 3.30pm-4.15pm
- 22nd October – SLT Drop in Session – Fallowfield Road – 7.45am – 8.30am
- 22nd October – Parents Evening – 4pm – 6.30pm
- 24th October – Parents Evening – 4pm -6.30pm
- 24th October – Y6 Express Event – 9.45am

Please talk to your children about these events...

- 28th October – 1st November – Half Term
- 4th November – INSET Day

Please support your child to participate in...

- 21st October – Y5 Dodgeball – Lode Heath School – 4.15pm – 5.30pm
- 5th November – Engage Events

Please click on the link below to see our Valley Calendar. This will be updated weekly with new events as they arise.

<https://www.valleyprimaryschool.co.uk/calendar/?calid=2&pid=8&viewid=3>