



Spring 1 Science Quest

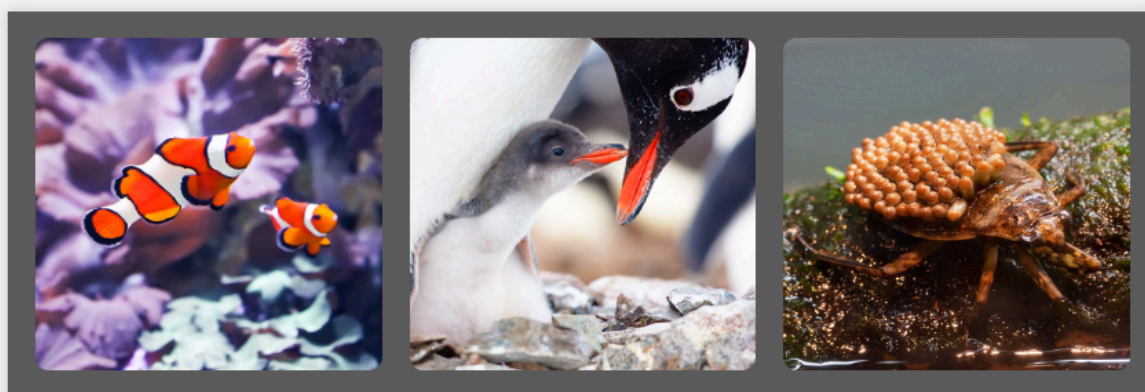


Are you ready to challenge yourself with a Science Quest?

This half term's challenge is to use our observation skills to predict the odd one out. There is no right answer as long as you can explain your reasoning. Earn 10 housepoints for your house by completing a challenge and sharing it in school.

Year 5

Looking after baby- Odd one out



Look at the images above.

1. Identify similarities and differences between the three animals.
2. Think about their habitat, animal class and their characteristics.
3. Which one do you think is the odd one out? Explain your reason.
4. Read the information below. Have you changed your answer? Why?

Background Science:

The three images were of a clownfish, a penguin and its baby, and a giant water bug. You may have noticed the young animals and eggs. These are all animals where the primary caregiver isn't necessarily the mum. A clownfish can change sex, penguin males and females will take turns looking after their offspring and the male water bug carries around fertilized eggs on its wings until they hatch.

Draw a detailed diagram of the odd one out.

Explain your reasons. Include scientific vocabulary that shows how this animal is different.

Possible words you could use are; **offspring, habitat, invertebrates, vertebrates, exoskeleton, animal class, warm blooded, cold blooded**

